

***SICUNET***

# DVR CMS User Manual

# Content

---

<b>CMS</b> .....	<b>3</b>
<b>Screen Configuration</b> .....	<b>3</b>
<b>Menu</b> .....	<b>3</b>
File .....	4
Remote .....	10
View .....	10
Layout .....	11
Tool .....	11
Help .....	12
<b>Tool Bar</b> .....	<b>13</b>
Setup Tool Bar .....	13
Remote Tool Bar .....	13
Tools .....	13
<b>Control Panel</b> .....	<b>14</b>
Device List .....	15
PTZ .....	16
<b>Screen Tab Panel</b> .....	<b>17</b>
Tab Menu .....	17
Live Monitoring .....	18
E-Map .....	20
<b>Events Status Panel</b> .....	<b>24</b>
Motion .....	24
Sensor .....	24
Video Loss .....	24
<b>Log Panel</b> .....	<b>25</b>
<b>Appendix</b> .....	<b>26</b>
SYSTEM REQUIREMENT .....	26
SPECIFICATION .....	26

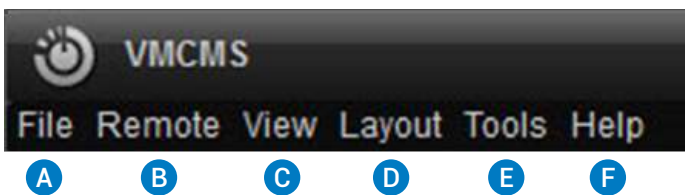
# CMS

## Screen Configuration



## Menu

Can setup and control each feature and function in detail menu like below



<b>A</b> File	Can Set and manage CMS, Device List and Log
<b>B</b> Remote	Can Set and manage Remote Setup and Remote Search.
<b>C</b> View	Can Set and manage Tool Bar & Panel.
<b>D</b> Layout	Can Set and manage Layout of Screen(Screen Division)
<b>E</b> Tool	Can Set and manage Tool Menu of Setup.
<b>F</b> Help	Show current CMS Version and Status.

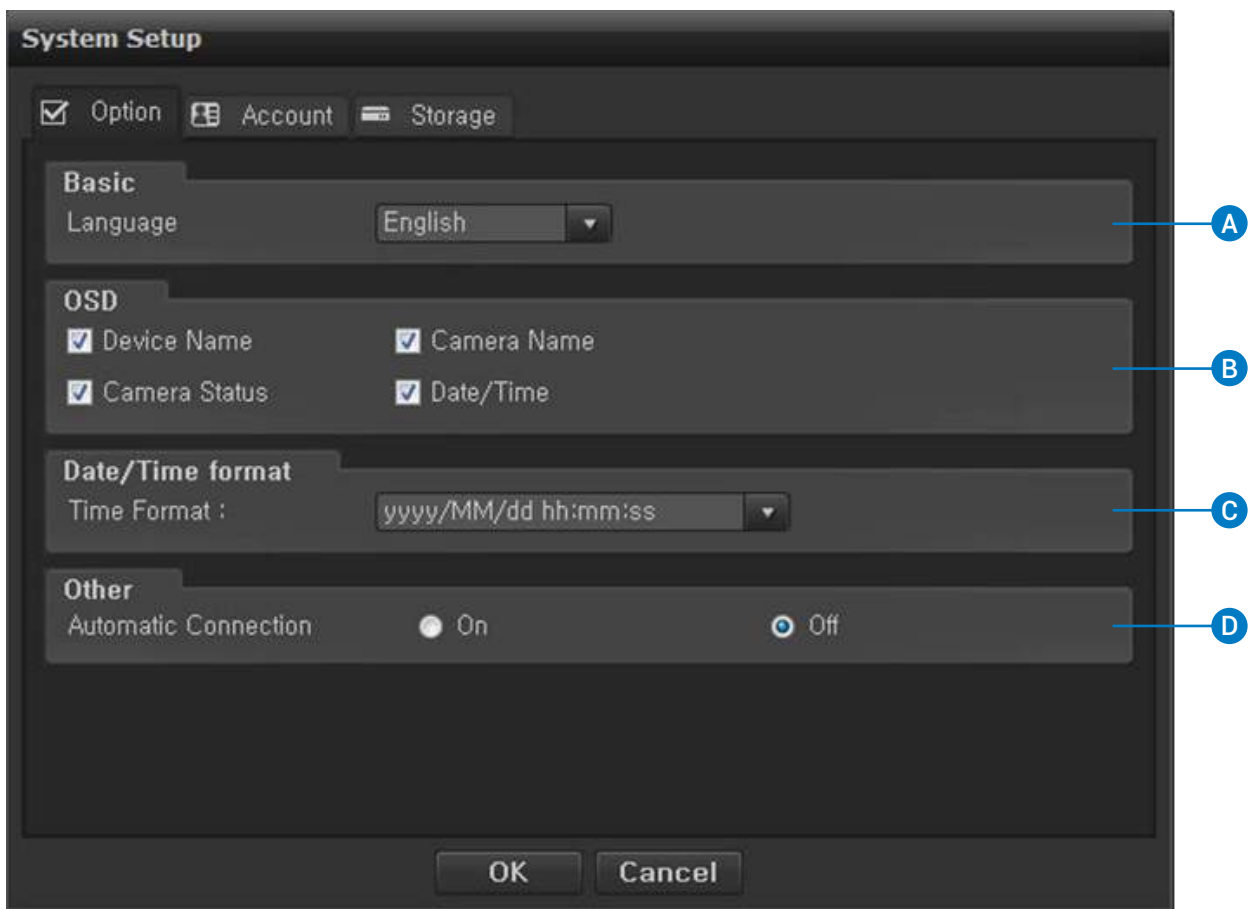
# File

- System Setup 1
- Device Manager 2
- Log Viwer 3
- Exit 4

1 System Setup	Can Set and manage Language, OSD, User Information, and etc in Dialog Window.
2 Device Manager	Set Tool Bar to be shown or not.
3 Log Viewer	Set Control Window to be shown or not.
4 Exit	Exit.

## 1 System Setup

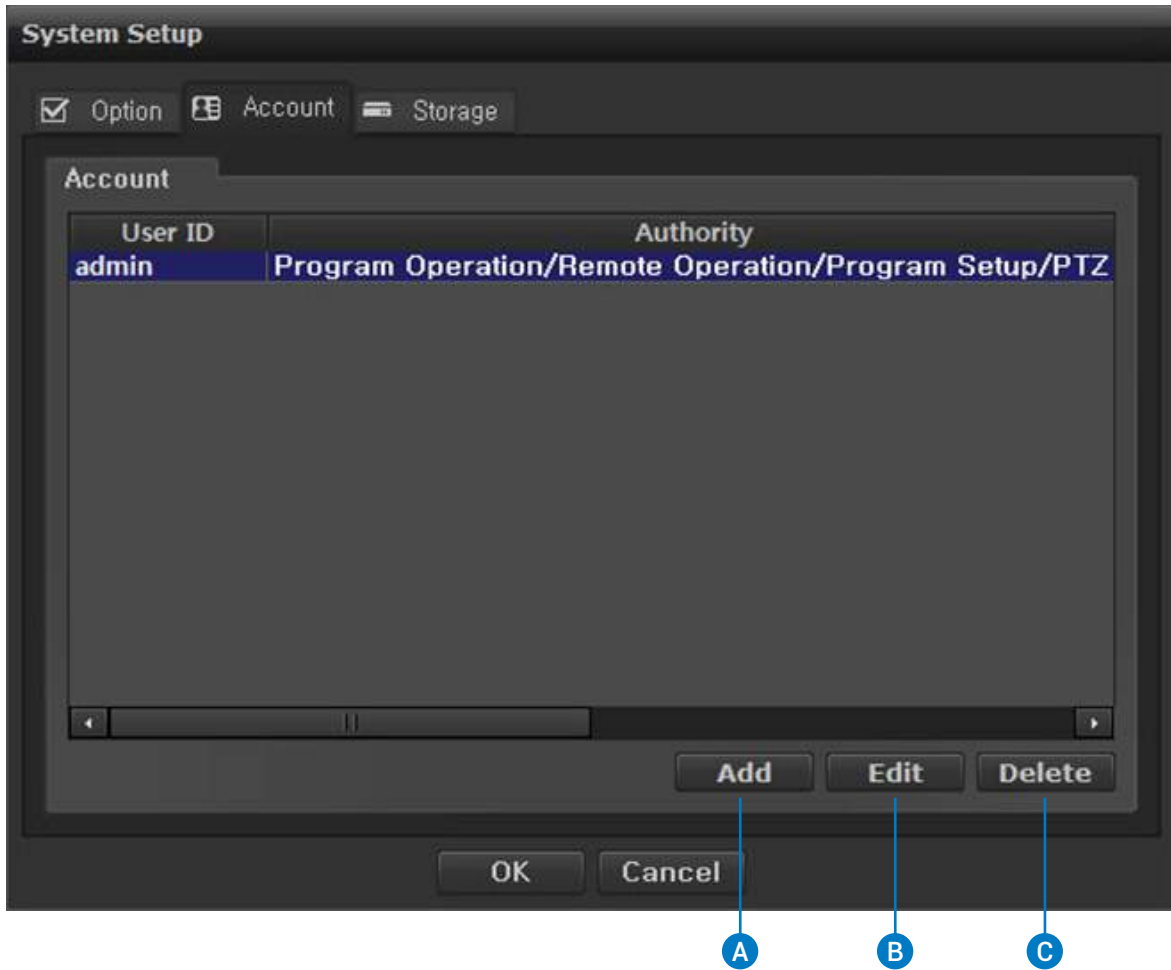
Option



<b>A</b> Language	Set Language in DVRs.
<b>B</b> OSD	Set OSD.
<b>C</b> Date/Time Setup	Set Date/Time & it's Format.
<b>D</b> Automatic Connection	Set Automatic Connection of CMS to Devices (DVRs).

**Account**

Set Account of Users (Add/Edit/Delete) and information.



**A** Account Add – Can Add User.

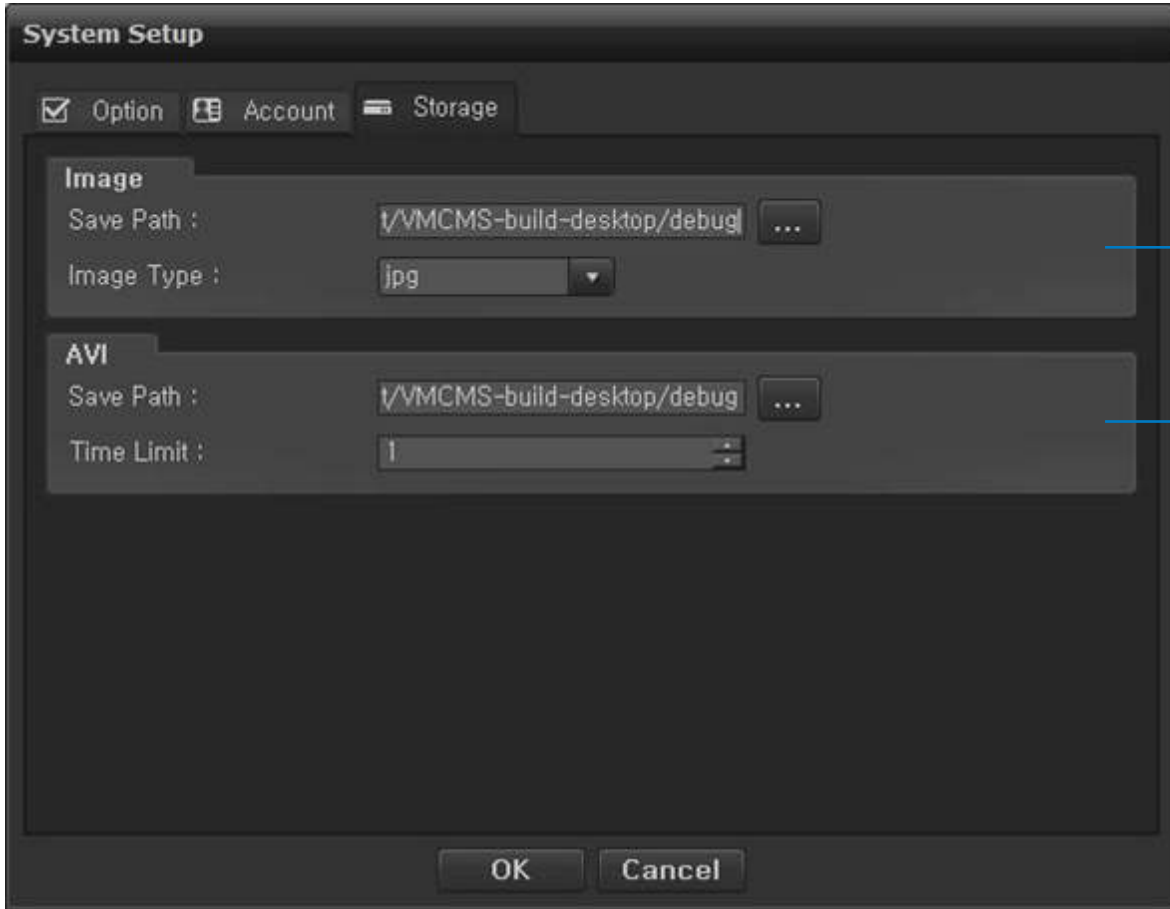
<b>a</b> User Information	Set User ID/Password.
<b>b</b> User Authority	Set each user's Authority for each function like above.

**B** User Edit – Can Edit User .

<b>a</b> User Information	Edit User ID/Password.
<b>b</b> User Authority	Edit each user's Authority for each function like above.

**C** User Edit – Can Delete User.

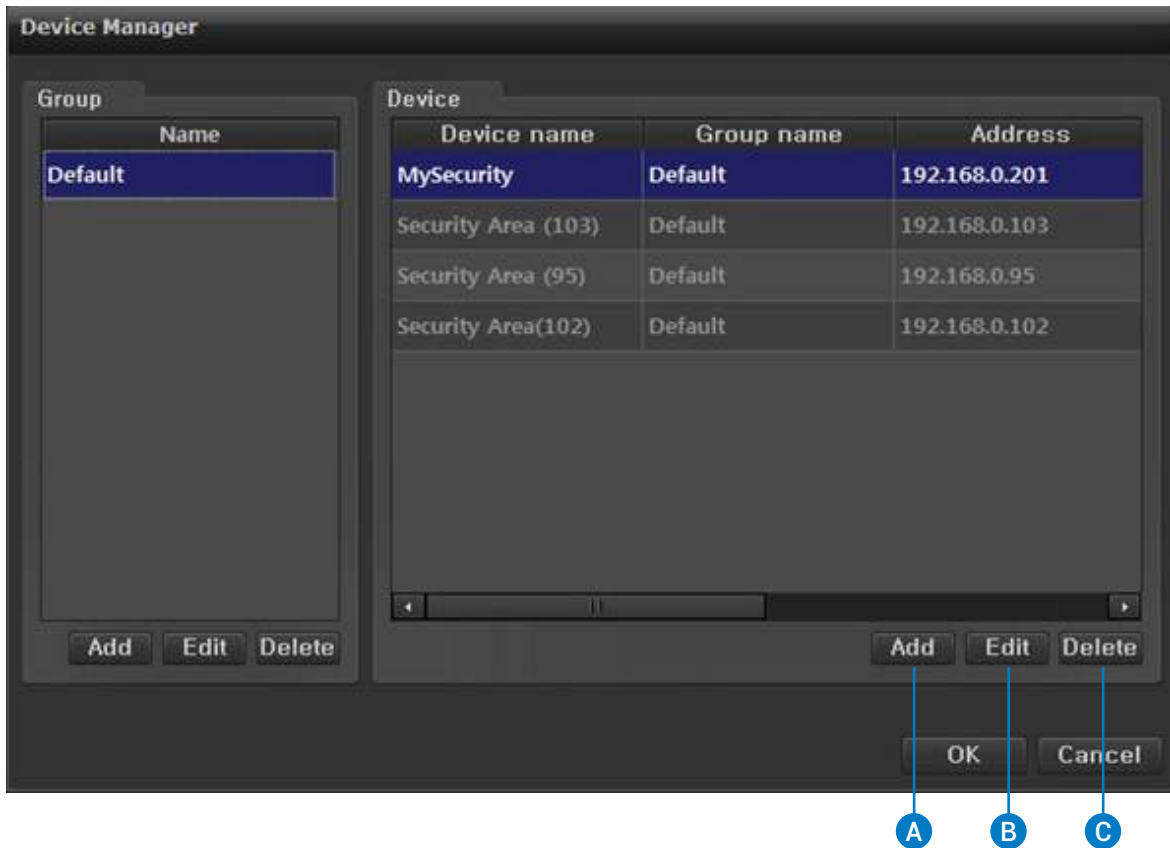
**Storage Setup**



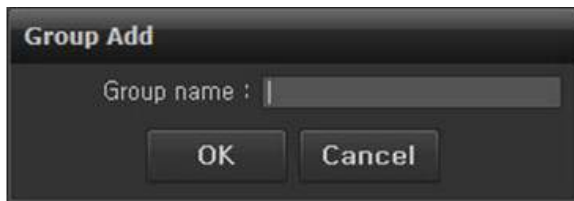
<p><b>A</b> Save Path</p>	<p>Set Path(directory or folder) to save Image, and Image Type(Jpg/ BMP file).</p>
<p><b>B</b> AVI</p>	<p>Set Path(directory or folder) to save AVI file, and Time Limit to save. (Max. 99 Min)</p>

## 2 Device Manager

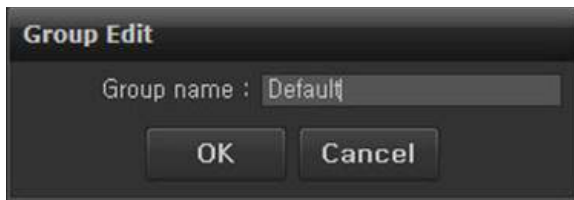
Can Set and manage details of connected Devices (DVRs in remote site)



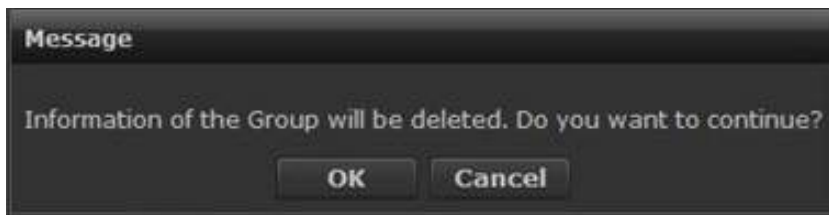
**A** Group –Add Group.



**B** Group Edit – Edit Group.



**C** Group Delete – Delete Group.



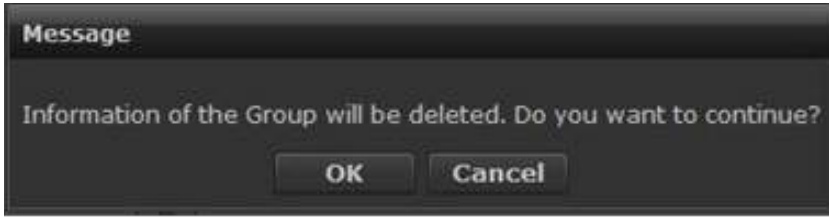


**D** Device Add – Add Devices.

<b>a</b> Group Name	Set Device Name to manage in each group.
<b>b</b> Device Information	Set Device Name/Model Name/IP Address/Port/Dual Stream.
<b>c</b> Device Account	Set Device's (DVR) registered ID/Password.

**E** Device Edit – Edit Device information like below.

**F** Delete Device – Delete Device. In <Delete>, warning message like below will be shown to confirm.



### 3 Log View

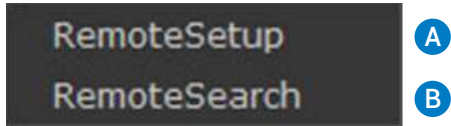
Set and Manage System Log View. (Refer to Manual's System Log).

### 4 Exit

Exit VMCMS.

## Remote

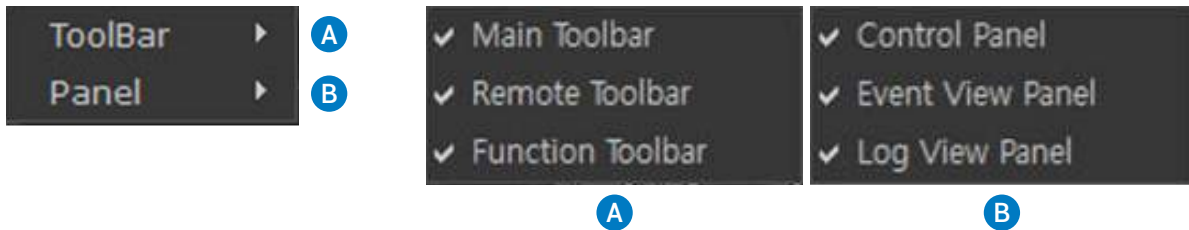
Can connect setup Remote Devices(DVRs) and Set <Remote Setup> and <Remote Search> in each SW .



<b>A</b> Remote Setup	Run <Remote Setup> SW(Window).
<b>B</b> Remote Search	Run <Remote Search> SW(Window).

## View

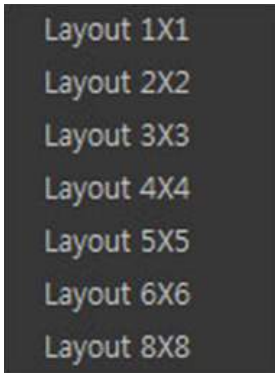
Can Set each <Tool Bar> and <Panel> to be shown or not in CMS main Screen.



<b>A</b> Tool Bar	Make each <Tool Bar> viewed or not.
<b>B</b> Panel	Make each <Panel> viewed or not.

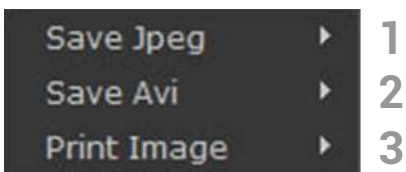
## Layout

Can Set and manage Layout of Screen(Screen Division).

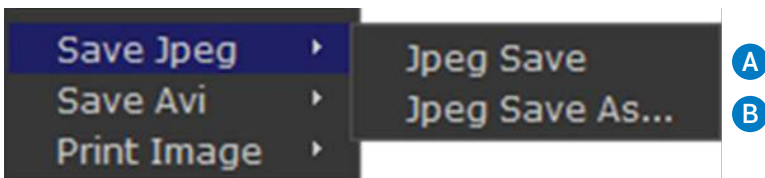


Layout – Set Layout of Sreen.(Max. 64 Division)

## Tool



### 1 Save Jpeg



<b>A</b> JPEG Save	Set directory(folder) to save Jpeg file.
<b>B</b> JPEG Save As	Set other directory(folder) to save Jpeg file.

### 2 AVI Save



<b>A</b> AVI Save	Set directory(folder) to save AVI file.
<b>B</b> AVI Save As	Set other directory(folder) to save AVI file.

### 3 Print

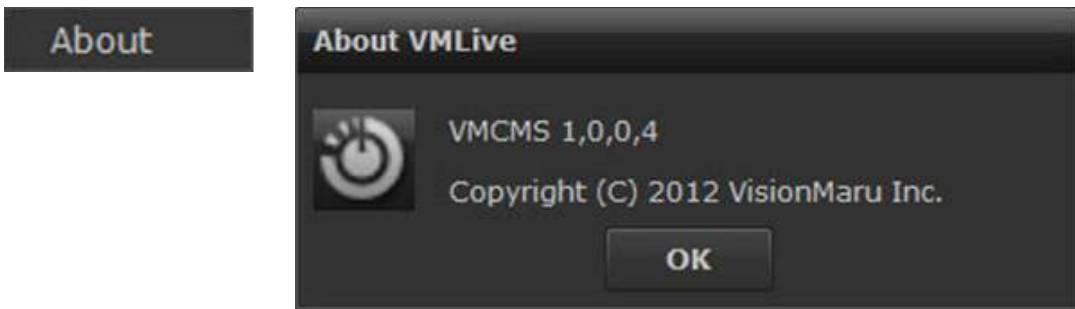


<p><b>A</b> Quick Print</p>	<p>Print quickly wanted CH image in default Printer.</p>
<p><b>B</b> Print</p>	<p>Show connected printers and print Image in wanted Printer.</p>

## Help

---

Show VMCMS Version and Copy right like below.



# Tool Bar



1	Setup
2	Remote Setup/Search
3	Tools

## Setup Tool Bar

Can run and set System Setup Menu.



## Remote Tool Bar

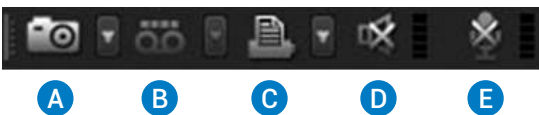
Can Run and set <Remote Setup> & <Remote Search> SW.



<b>A</b> Remote Search	Run <Remote Search> SW.
<b>B</b> Remote Setup	Run <Remote Setup> SW.

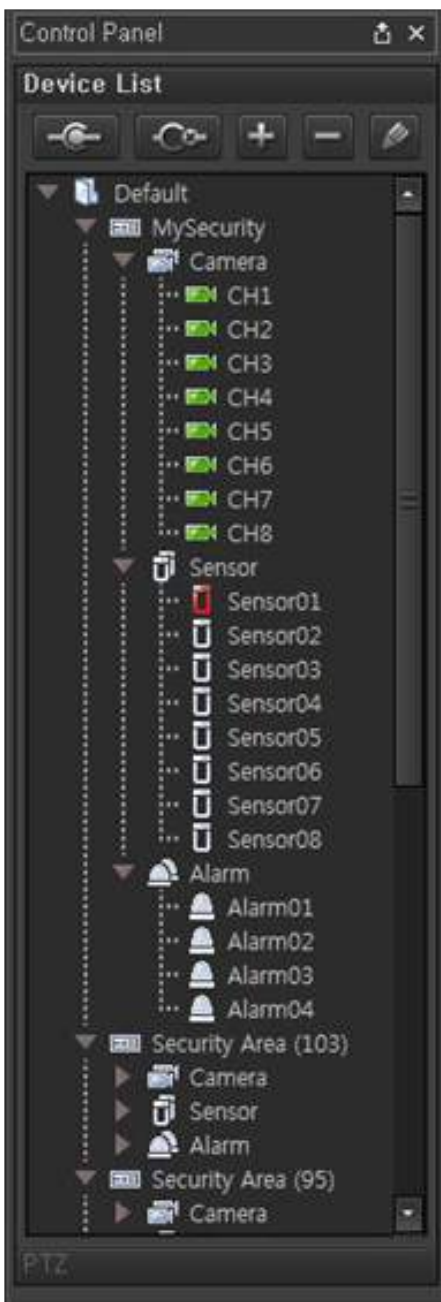
## Tools

Can run and setup major functions in CMS by just clicking each Tool Icon



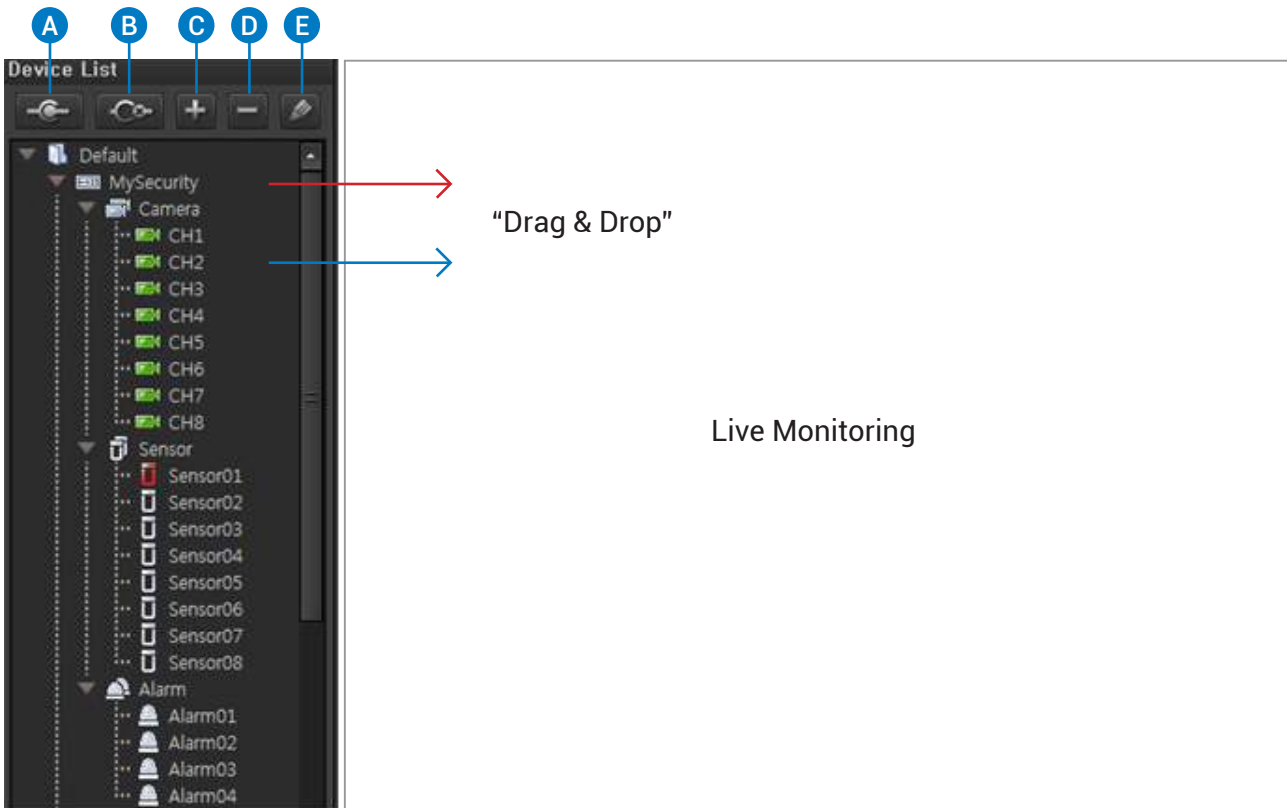
<b>A</b> JPEG Save	Save JPEG Image.
<b>B</b> AVI Save	Save AVI Image.
<b>C</b> Quick Print	Print quickly wanted CH image in default Printer.
<b>D</b> Mute	Mute Audio.
<b>E</b> Dual Audio(Microphone/Speaker)	Request Dual-Audio to DVR, and blinking till DVR accept that signal. When connected, users can use Microphone.









## Control Panel



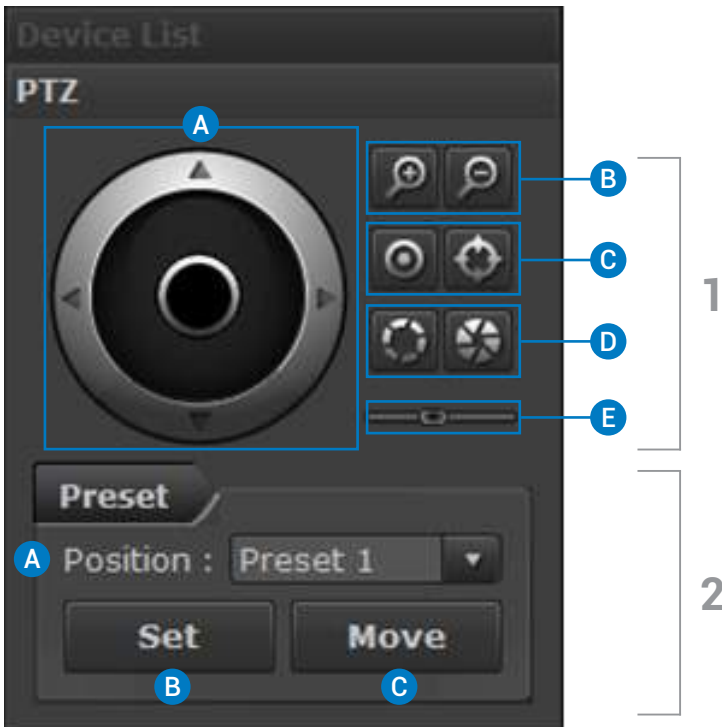
<b>A</b> Device List	Show and Manage connected Devices (Camera/Sensor/Alarm) in Panel List.
<b>B</b> PTZ	Run PTZ control Panel.

## Device List



<b>A</b> Connect	Connect registered Device to CMS.
<b>B</b> Disconnect	Disconnect Devices.
<b>C</b> Add	Add Device to CMS.
<b>D</b> Delete	Mute Audio.
<b>E</b> Edit	Delete Device in CMS.
<b>F</b> List	Shows all connected Devices in the list like below.
<b>a</b>  Site	Show Connected Sites in Folder Icon
<b>b</b>  Device	Show Connected Devices in Device Icon (Just Drag & Drop the Connected Devices to Live Screen to Monitor while connection)
<b>c</b>  Camera	Show Connected Cameras in Camera Icon (Just Drag & Drop the Connected each Camera to wanted Live Screen position to Monitor while connection). 1)  Camera : In Events, it is blinking.
<b>d</b>  Sensor	Show connected Sensor 1)  Sensor : In Events, it is blinking.
<b>e</b>  Alarm	Show connected Alarms 1)  Alarm: In Events, it is blinking.


# PTZ



## 1 PTZ Setup

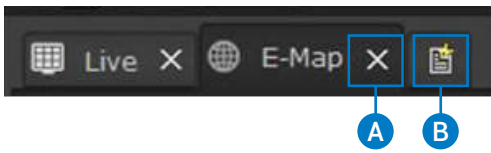
<b>A</b> Direction Buttons	PTZ direction control buttons. By clicking Jog Button in the middle, users can control Direction.
<b>B</b> Zoom	Zoom In/Out.
<b>C</b> Focus	Focus Control.
<b>D</b> Iris	Iris Control.
<b>E</b> PTZ Speed Bar	PTZ speed Control Bar.

## 2 Preset

<b>A</b> Position	Select & Set Preset Number. 
<b>B</b> Set	Set Preset in wanted Directions, and save it as wanted Preset Number.
<b>C</b> Move	Can move to setup Preset



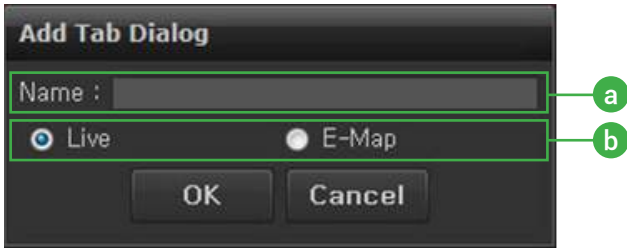
# Screen Tab Panel



<b>A</b> Delete	Delete Tab.
<b>B</b> Add	Add Tab.

When adding Tab, Dialog Box will be shown <Live/E-Map>.

**\*\* In Each Tab, users can Set and Manage new Live & E-Map for wanted Device Group.**

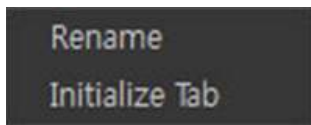


<b>a</b> Name	Set new Tab Name.
<b>b</b> Type	Set and Manage Live or E-Map Tab.

## Tab Menu

### 1 Live Tab Menu

By clicking right button of mouse in <Live Tab>, menu below will be shown.




<b>A</b> Rename	Rename Tab Name.
<b>B</b> Initialize Tab	Initialize Tab Setup Values.

### 2 E-Map Tab Menu

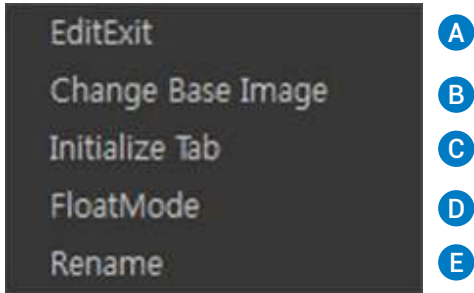
By clicking right button of mouse in <Live Tab>, menu below will be shown.


In <Live Monitoring>, quick menu will be shown.



<b>A</b> Edit Mode	Edit Tab.
<b>B</b> Float	Separate(Float) current <Live Monitoring> Tab  In clicking this, <Float> mode return to Fixed Tab.
<b>C</b> Rename	Rename Current Tab Name.

In <Edit>, quick menu will be shown







<b>A</b> Edit Exit	End Edit Mode and return to normal model.
<b>B</b> Change Base Image	Change E-Map background Image.
<b>C</b> Initialize Tab	Initialize E-Map Setup Values.
<b>D</b> Float Mode	Float – Separate(Float) current <Live Monitoring> Tab  In clicking this, <Float> mode return to Fixed Tab.
<b>E</b> Rename	Rename Current Tab Name.

## Live Monitoring



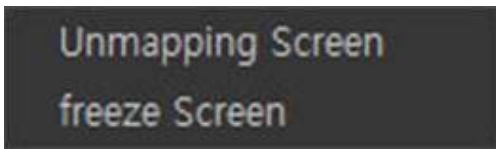
## Video OSD(Icon)

Name	Description
Camera Name	Shows Camera Name (Title)
Motion Detection	Shown when Motion is detected 
Dual Streaming	When Recording FPS is transmitted in Remote, DSR(Dual Streaming) is shown. (Refer to Dual Streaming Record/Network) 

PTZ	Show PTZ Camera(Connected) 
Audio	Show Audio Status 
Time	Show Current Time

## Context Menu

Can Set and Manage Menu by clicking the right button of mouse.



- A** Delete current Live Video in wanted CH.
- B** Freeze Video.

## Screen Division

Set and Manage Screen Division.



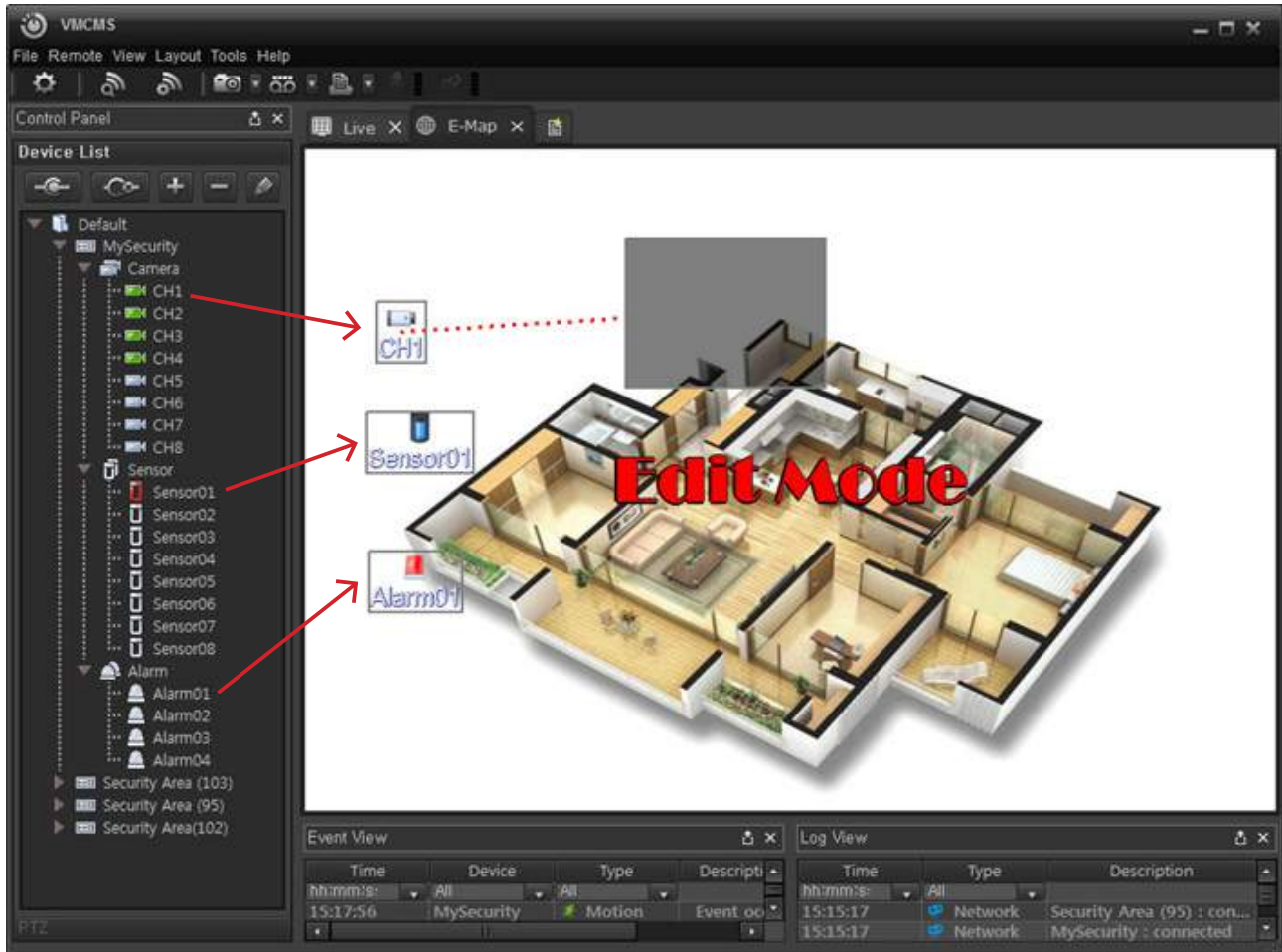
Layout - 1x1, 2x2, 3x3, 4x4, 5x5, 6x6, 8x8 , Full Screen

Each button has a menu on the right side, you can go directly to the selected page layout.

## E-Map

### Edit Mode

In <Edit Mode>, users can set (Add/Delete/Move) Camera/Sensor/Alarm Icons in each Background Image(Blue Print).

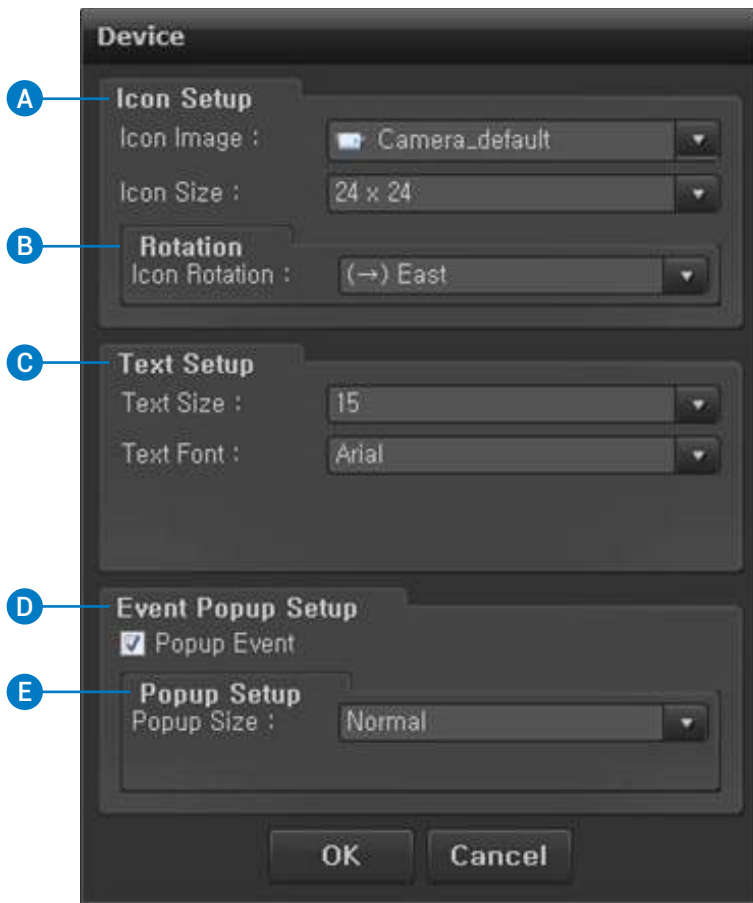


### 1 Icon Positioning

By just Drag & Drop, users move each icon to any position.

- 1)  Camera – Position Pop-Up Camera(Video).

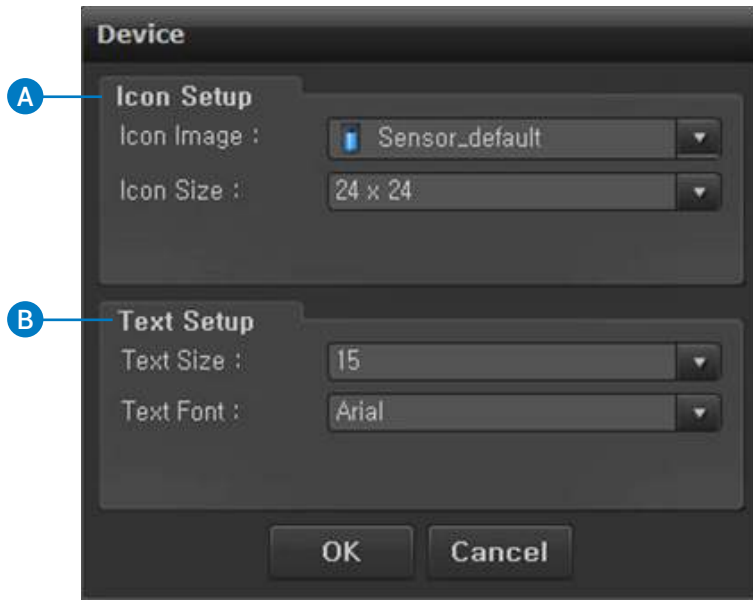
( By clicking Icon or Pop-Up Video, users can see Dialog Box below)



<b>A</b> Icon Setup	Set Icon Image/Size.
<b>B</b> Rotation	Set Rotation of Icon.
<b>C</b> Text Setup	Set Icon's font and size.
<b>D</b> Event Pop-Up	Set Events for Pop-up Video.
<b>E</b> Pop-up Size	Set Pop-Up window Size.

2)  Sensor

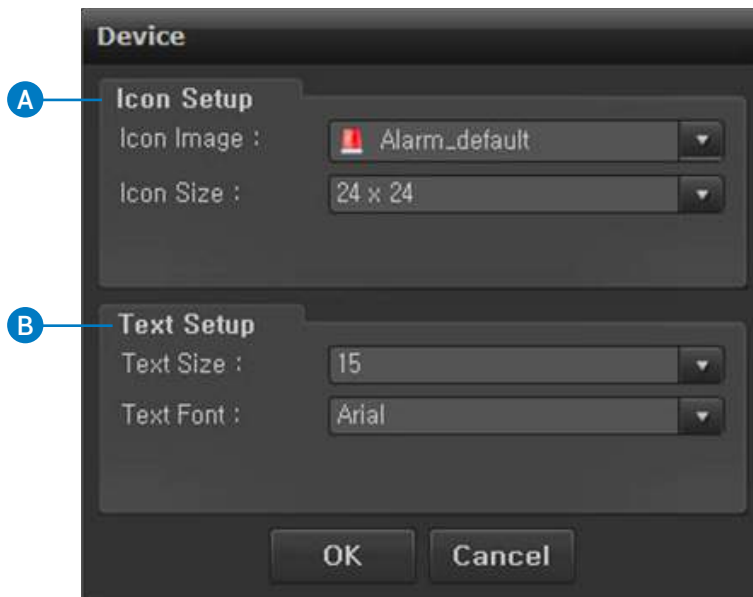
(By clicking Icon, users can see Dialog Box below. )



<b>A</b> Icon Setup	Set Icon Image/Size.
<b>B</b> Text Setup	Set Icon's font and size.

3)  Alarm

(By clicking Icon, users can see Dialog Box below. )



<b>A</b> Icon Setup	Set Icon Image/Size.
<b>B</b> Text Setup	Set Icon's font and size.

## 2 Delete Icon

By clicking Icon or Pop-Up, users can see Dialog Box below.

<div style="background-color: #333; color: white; padding: 5px; display: inline-block;">                 Edit Delete             </div>	A	A Edit	Run <Edit Mode>.
	B	B Delete	Delete Icon.

## Icons in Monitoring Mode

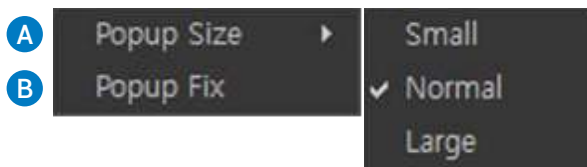
### 1 Camera – In Events is blinking





### 2 Fix Pop-Up Video

By double-clicking Icon, users can Fix Icon be shown always.

### 3 Context Menu

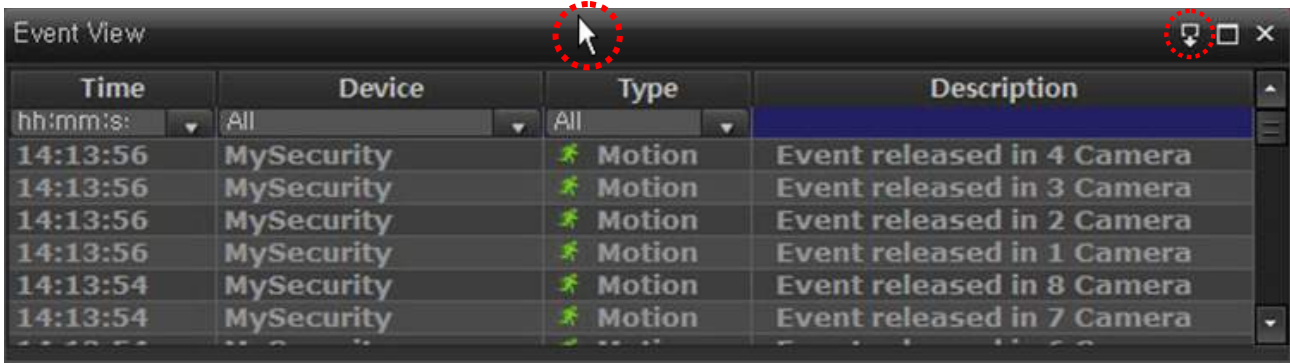
By clicking right button of mouse, user can run Context Menu for quick setup of each icon.



A	Pop-up Size	Set Pop-Up Video Window Size.
B	Pop-up Fix	Fix Pop-up Video(shown always).
a	 Sensor	In Events  is blinking.
b	 Alarm	In Events  is blinking


# Events Status Panel

In Event Status Panel, users can check and manage all Events at a glance. By clicking <Event View> or <Float> button, users can separate this Panel.




<b>A</b> Time	Set Time Format.
<b>B</b> Device	Set Device List Format.
<b>C</b> Type	Set Events Type to be shown.


## Motion

 It is activated in motion detection.  
Check in each CH.

## Sensor

 It is activated in Sensor detection.  
Check in each CH.

## Video Loss

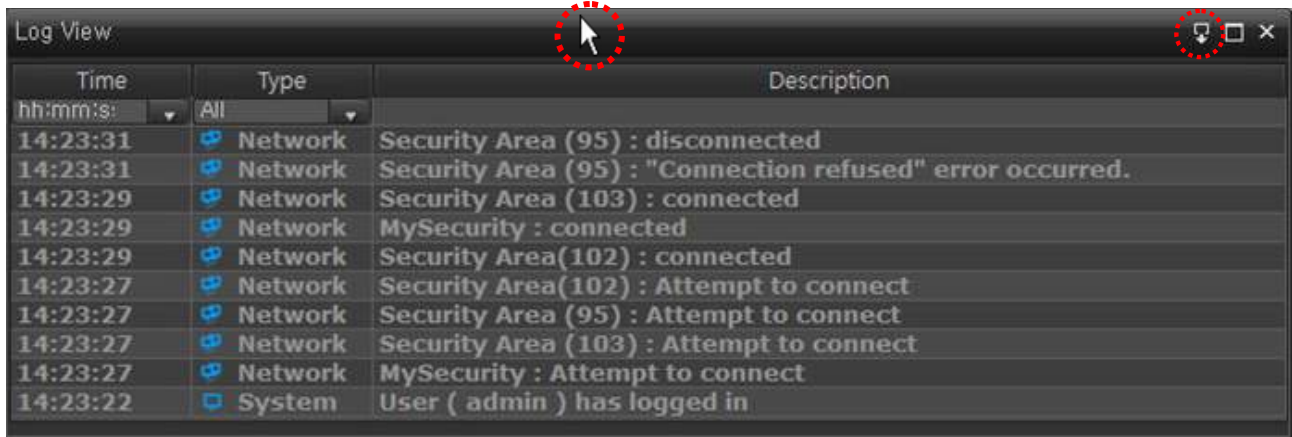
 It is activated in Video Loss detection.  
Check in each CH.



# Log Panel

Check and Manage all Logs while running CMS.

By clicking <Event View> or <Float> button, users can separate this Panel



A

B

A Time	Set Time Format.
B Type	Set Log Type to shown and manage.

## Appendix

### SYSTEM REQUIREMENT

Item	Min	Recommended
O/S	Windows XP, Vista, 7	Windows XP, Vista, 7
CPU	Intel Pentium4 Dualcore 1.8GHz Over	Intel Pentium Core i5 2.8GHz Over
RAM	1G	3G Over
VGA	64M	512M Over
LAN	10/100Base-T	1000Base-T

### SPECIFICATION

Item	SPEC
OS	Windows XP,Vista,7
Live Monitoring CH	64 CH
Remote Monitoring	Yes
Remote Search	Yes
Remote PTZ	Yes
Dual-Audio	Yes
Max Connectible Sites	256 Sites
Resolution	Min:1024*768 /Max: ~
Multi Monitors	Yes
E-MAP	Yes
E-MAP PIP	16CH
Real-Time EVENT VIEW	Yes
Log & Events	Max 3000
Image Out	Jpg / AVI / Print