

QuickGuide Information

SNR-3000 NVR Series

SICUNET

Sicunet Inc.

3001 Red Hill Ave. Suite 2-205

Costa Mesa, CA 92626

www.sicunet.com

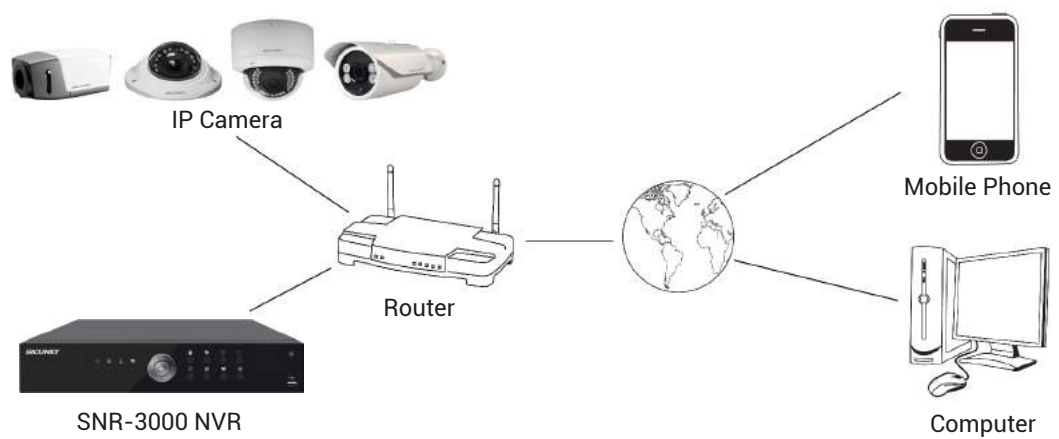


PoE Built-in Series	
16CH	SNR-3016P(16PoE)
8CH	SNR-3008P (8PoE)
4CH	SNR-3004P (4PoE)

Without PoE Built-in Series	
32/16CH	SNR-3032 / 3016
8CH	SNR-3008
4CH	SNR-3004

This QuickGuide provide how to setup IP NVR System for connecting with the Internet via network in case of using a PC, Mobile or Tablet Computer.

Before your begin, ensure that you have between A Router & High Speed Internet Access and The NVR connected to a router on the network, using an Ethernet cable



Internet / Remote Network Surveillance

01 Local Network Setup – Network DDNS / Cloud

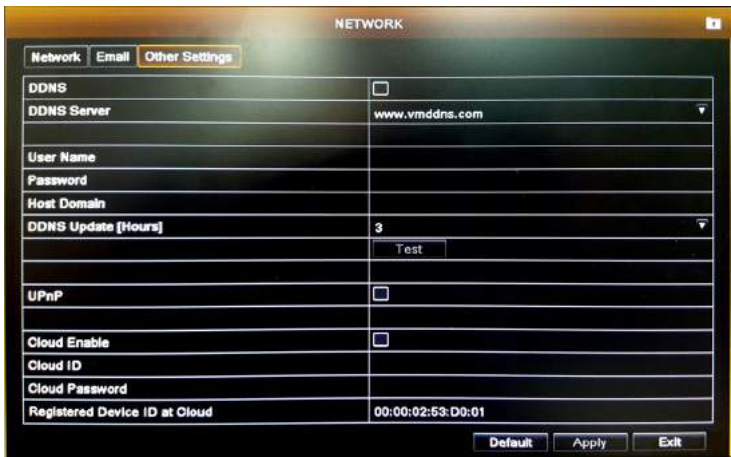
How to setup for DDNS, Cloud at NVR System

- 1) Configure the network setting as either Fixed IP manually or DHCP automatically.
- 2) Ensure that NVR can connected to the LAN or WAN.



- HTTP Port : 80
- Server Port : 5000
- User can use Fixed IP or DHCP Mode as left image. Input the IP Address as required columns.

- 3) Choose Cloud or DDNS Option in Network – Other Settings, and clicking checkbox to enable for DDNS and Cloud, and input the required data. Router Port Mapping Setup for DDNS.



- DDNS Site : www.vmddns.com
- Input user name/pw, host domain and updating time period. And then finally get the success test.
- uPnP : Checkbox
- Cloud : Input User name & PW for easy network connection.

02 How to setup IPC with NVR via Network

IPC SETUP

Channel	Channel 2	Index	IP address	Protocol	Port	Onvif Port	Sub
IP address	192.168.020.161	<input type="checkbox"/> 1	192.168.20.211	Private/Onvif	5000	12001	255
Protocol	Onvif	<input type="checkbox"/> 2	192.168.20.215	Private	5000	0	255
Port	8000	<input type="checkbox"/> 3	192.168.20.125	Onvif	0	0	
User Name	admin	<input type="checkbox"/> 4	192.168.20.160	Onvif	0	8000	
Password							

Channel	IP address	Port	Protocol	Status
1	192.168.20.160	8000	Onvif	Connected
2	192.168.20.161	8000	Onvif	Connected

- After success network setup of NVR System, user need to register IP Camera via private or OnVIF Protocol by clicking "Discovery" & searching camera list.
 - User can easily connect IP Cameras as you can see the above image.
- Private Protocol : 5000, OnVIF Protocol : 12001.** NVR User name & PW.
- For camera resolution/fps/bitrate setup, you can setup at Main Stream/ SUB Stream menu easily.

03 Router Port Mapping with NVR ddns

How to setup Router Port Mapping

Port Range					
Application	Start	End	Protocol	IP Address	Enabled
HTTP	80	to 80	Both	192.168.1.108	<input checked="" type="checkbox"/>
TCP	5000	to 5000	Both	192.168.1.108	<input checked="" type="checkbox"/>

- 1 Map the TCP port to be 5000
- 2 Map the HTTP port to be 80

No	Name	Private address	External Port	Internal Port
1	a	192.168.1.59	57000	5000~5000
2	b	192.168.1.59	57000	5000~5000

Guide for DDNS Port Mapping :

PC Windows – Search - **input " cmd "**.

For Router connection to get gateway address, after **input "ipconfig"** and enter.

After find out basic gateway address, please **input gateway address : <http://192.168.1.1:80>**, and then user can go into **web setup menu for router in order to setup DDNS Additionally**.

From NVR WEB Port(80), TCP/UDP server Port(5000). Port forwarding as above table.

To figure out public IP Address in my PC, myipaddress.com, then show your using Public IP Address in your PC.

04 How to setup record / record schedule



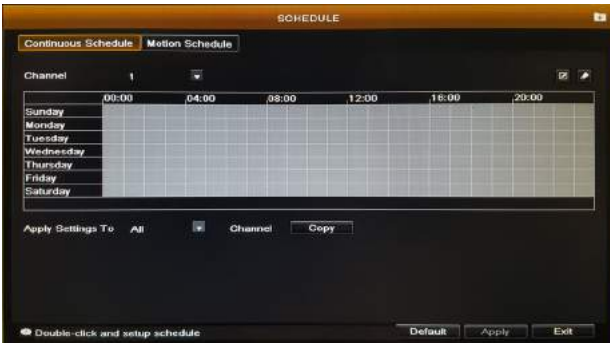
- Key Notice :

Enable IP Camera record or not.

If not selected at checkbox per camera, the camera do not record anymore. Please make sure to check this checkbox for recording.



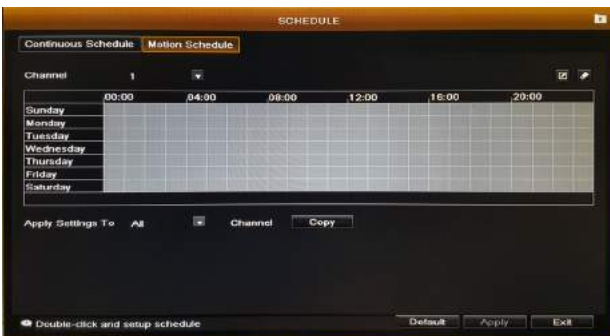
For recording User should install HDD necessarily. When HDD Data is full, if user want to write data continuously, please select this checkbox of Overwrite.



When user want to record by schedule, user can configure this schedule record mode.

For setup schedule mode, user need to double click on schedule table, then mode into schedule setting mode.

Pleaser select ADD Button.

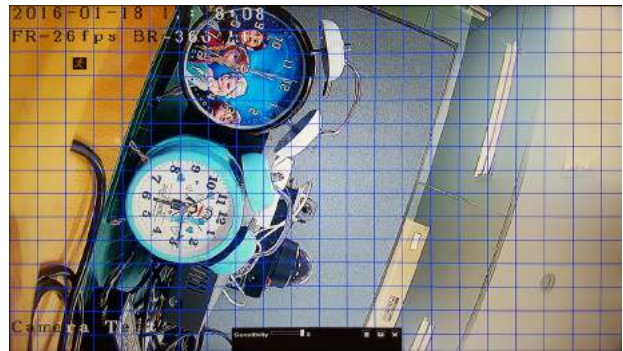
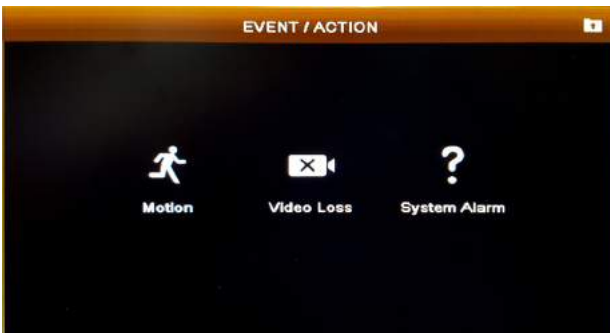


When user want to record by Motion schedule, user can configure this Motion schedule record mode.

For setup motion schedule mode, user need to double click on schedule table, then mode into schedule setting mode.

Pleaser select ADD Button.

additionally need to setup motion setting per individual camera as the left below image.



For detail motion setting as the following process :

- (1) Event / Action
- (2) Motion
- (3) Motion – Trigger
- (4) Motion Area

User can setup motion area by mouse drag with motion sensitivity or delete.

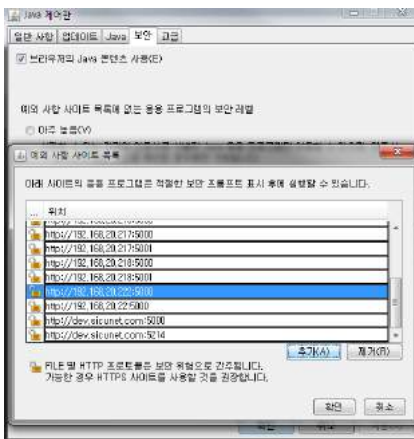
05 How to access WEB Viewer via Network

Default IP Address	http://192.168.0.200
NVR Server Port	5000
WEB Access IP Address for NVR	http://192.168.0.200:5000
ID	admin
Password	1111

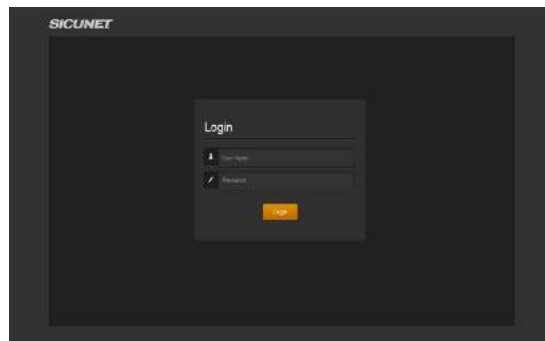


(1) First of all, user should install JAVA Update at user PC and also need to add the using IP Address at JAVA Security session as the left below image.

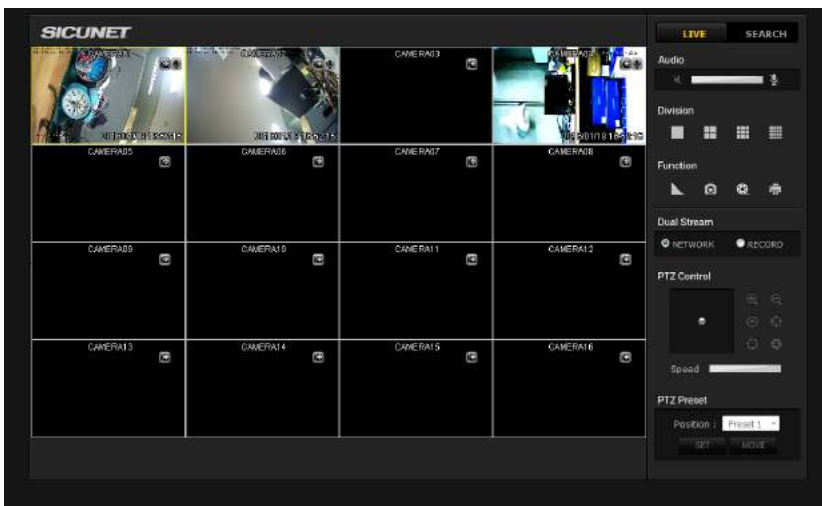
(2) User input NVR IP Address as above, and then when it comes login screen, input ID/PW.



(3) Finally, user can see live mode of WEB Viewer.



WEB Login

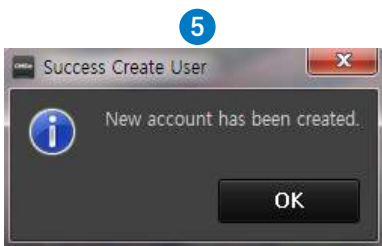
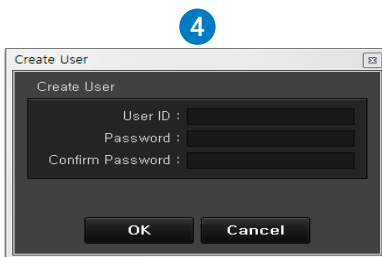
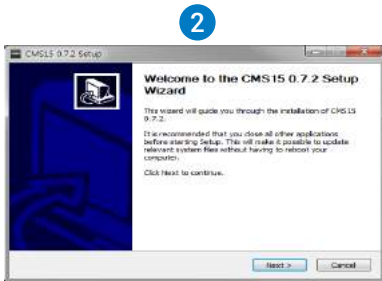
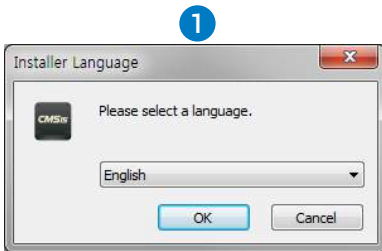


WEB Live

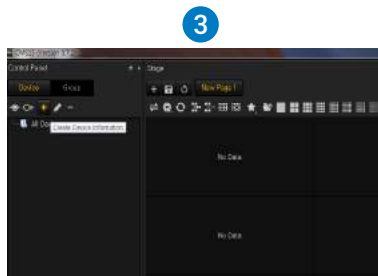
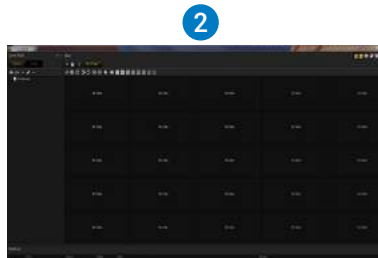
06 NVR, IPC Setup at CMS by Cloud Network

How to register NVR by Cloud connection at CMS

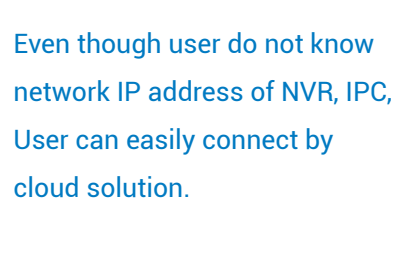
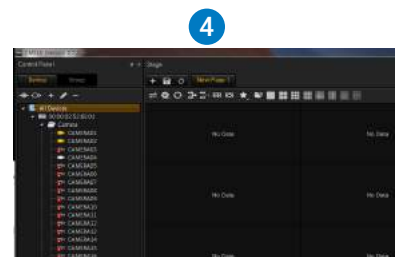
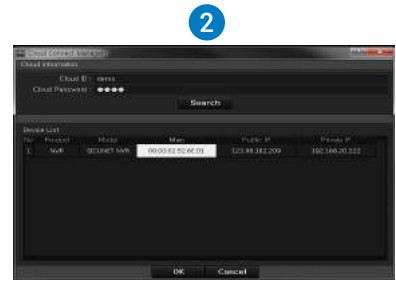
CMS Install & CMS Login



Register device By Basic Network

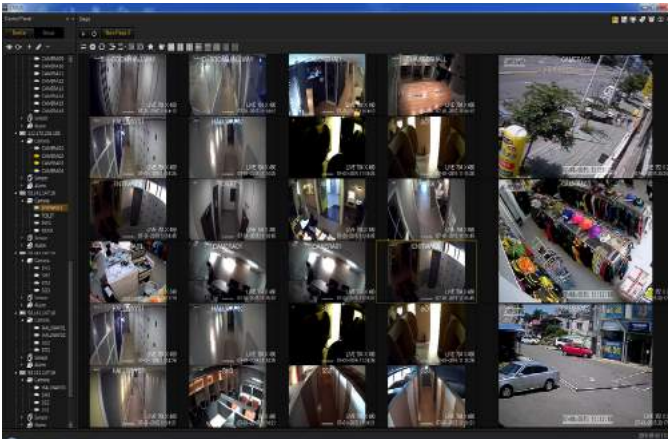


Register device By Cloud solution



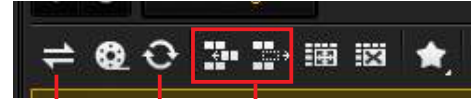
Even though user do not know network IP address of NVR, IPC, User can easily connect by cloud solution.

07 How to remote playback

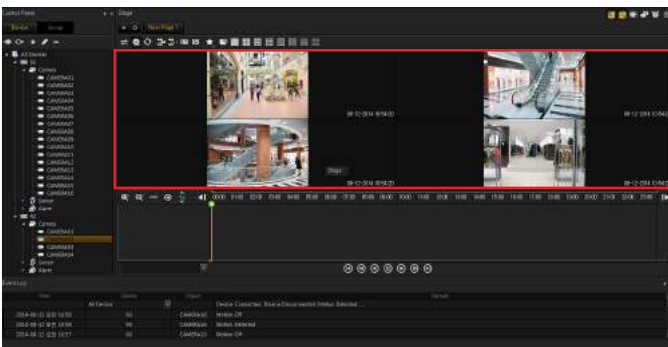


Live Display

- After success of NVR,IPC registration, User can connect registered devices as it can see the 1st left image.



E-map Rotation Screen Edit
Expand & Merge



Search



- Please select 2nd toggle button for search and playback. At left bottom of Calendar, can see the recorded date and select the date for playback.

08 How to setup Mobile – Cloud, Network

Andorid App Download	smartvision
iOS App Download	smartvision1



- After installation of downloaded app, user need to register local NVR or IP Camera as following menu.

- (1) Click Menu and then select Device List of 2nd button, and then click plus(+), then user can see Add Manual / IP Installer. Please select Add Manual, then you can see setup mode.
- (2) Please input Site Name, IP/Host(address), and Port Number(5000)
- (3) Finally input the registered User Name and PW of NVR System, and then click "Done"

How to setup Mobile by Cloud connection

- (1) Please input SITE ID & PW at registered Cloud Setting at NVR System.
- (2) At Device MAC, please click Search button after input the registered user ID & PW at NVR System, Then can see MAC Address of NVR.
- (3) And then finally click "Done". User succeed to register NVR System at Mobile of Android / i-OS App.



09 Mobile Access – WiFi, 3G/LTE(Public), 3G/LTE(ddns)

How to access Mobile for Android / i-OS app.

- (1) In case of WIFI Network, how to access by private IP address :
 - Site Name / IP/Host(ex, using IP Address at NVR) : 192.168.10.59, Port : 5000
 - Input Account-User Name/Password (admin / 1111)
- (2) In case of 3G/LTE Network, how to access by public IP address :
 - Site Name / IP/HOST(Example): 123.98.180.207
 - Port : 57000 (example, 57000, Port Mapping at router by user defined)
 - Input Account-User Name / Password (admin / 1111)
- (3) In case of 3G/LTE Network with DDNS setting : Sicunet DDNS Server (vmddns.com)
 - Input Site name / IP/HOST Name : 2015sicu@vmddns.com
(ex) 2015sicu – HOST NAME)
 - Port : 57000(example), internal 5000 port number to 57000 external port number)
 - Input Account-User Name / Password (admin / 1111)

10 Warning Notice-Technical Service Contact

Important System cautions & warning information when using system

- (1) Please do not lay on the heavy materials on top of the system.
- (2) Please install system on the plate surface place and also keep the proper temperature. In case of installing into an enclosed space or area without air circulation or near water & moisture area, it may cause the reason of fire, thus.
It keep the proper operating temperature (0° ~40°)
- (3) Before completing installation, please do not input power code of the system.
- (4) When running system, please do not plug off power cable forcibly. It may cause the reason of system malfunction or damage of HDD.
- (5) When installing SATA HDD, user must format SATA HDD based on FAT32 FORMAT.
- (6) Use only with the supplied power converters. The Ethernet connection is not intended to be connected to an exposed network.
- (7) There is a risk of explosion if the battery is replaced by an incorreced type.
Dispose of used batteries in accordance to local laws.
- (8) Installing & servicing should be performed only by qualified and experienced technicians to conform to all local codes and to maintain your warranty.
- (9) Situate away from items that produce heat or are heat sources such as radiators, heat registers, stoves, or other products (including amplifiers)
- (10) Do not replace parts without any written permission or confirmation from manufacturer, it may cause malfunction or system error or no working.

Technical Contact

TEL : +82-70-8286-2808

E-mail : sales@sicunet.com